

# IATROGENIE EN NEONATOLOGIE : MALPOSITIONS DES CATHETERS

6èmes RENCONTRES  
PEDIATRIQUES DE TLEMCEN  
25/26 MAI 2012

# IATROGENIE EN NEONATOLOGIE : MALPOSITIONS DES CATHETERS

- Dr Chiara Siléo
- Imagerie médicale de la polyclinique de Pavie  
Italie
  
- Dr Tayeb Benharrats
- Pr Hubert Ducou Le Pointe
- Imagerie médicale Hopital TROUSSEAU PARIS

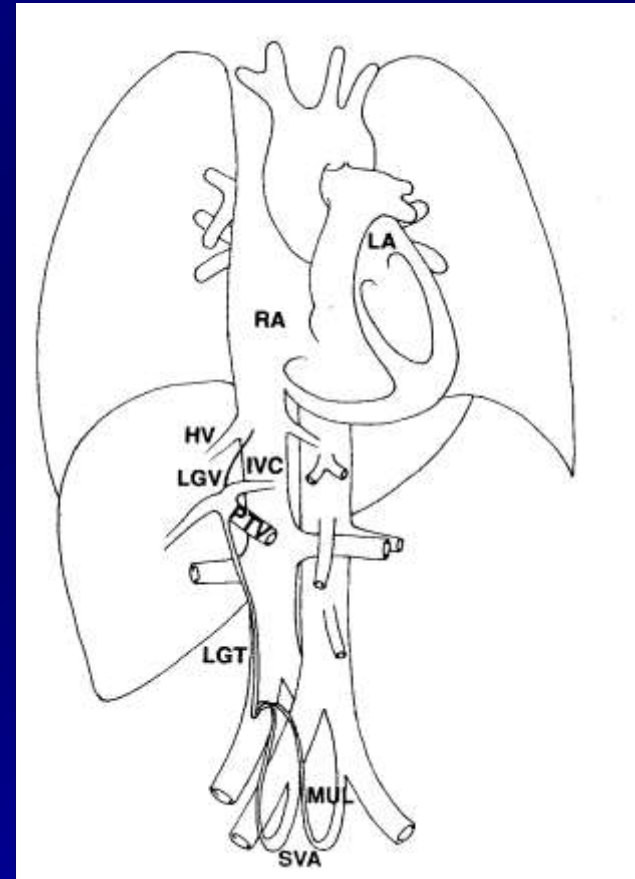
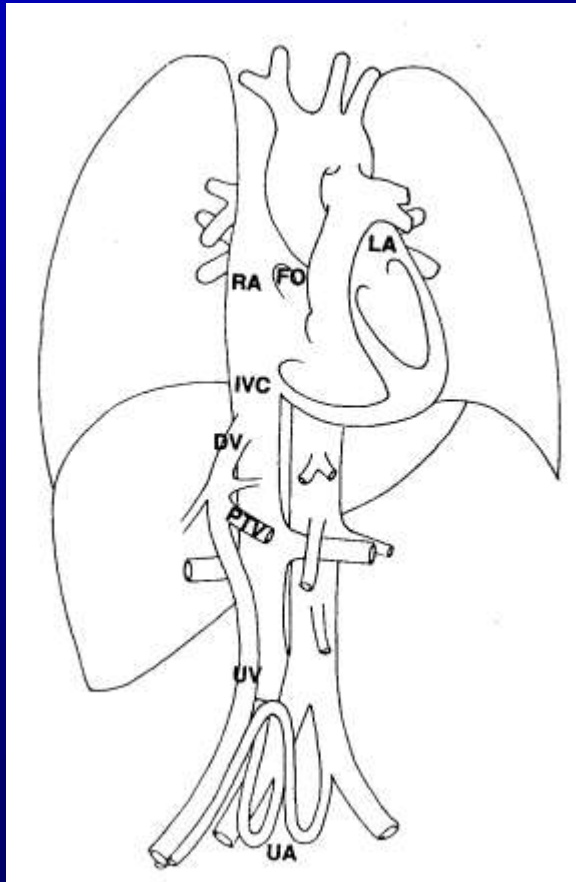
# INTRODUCTION

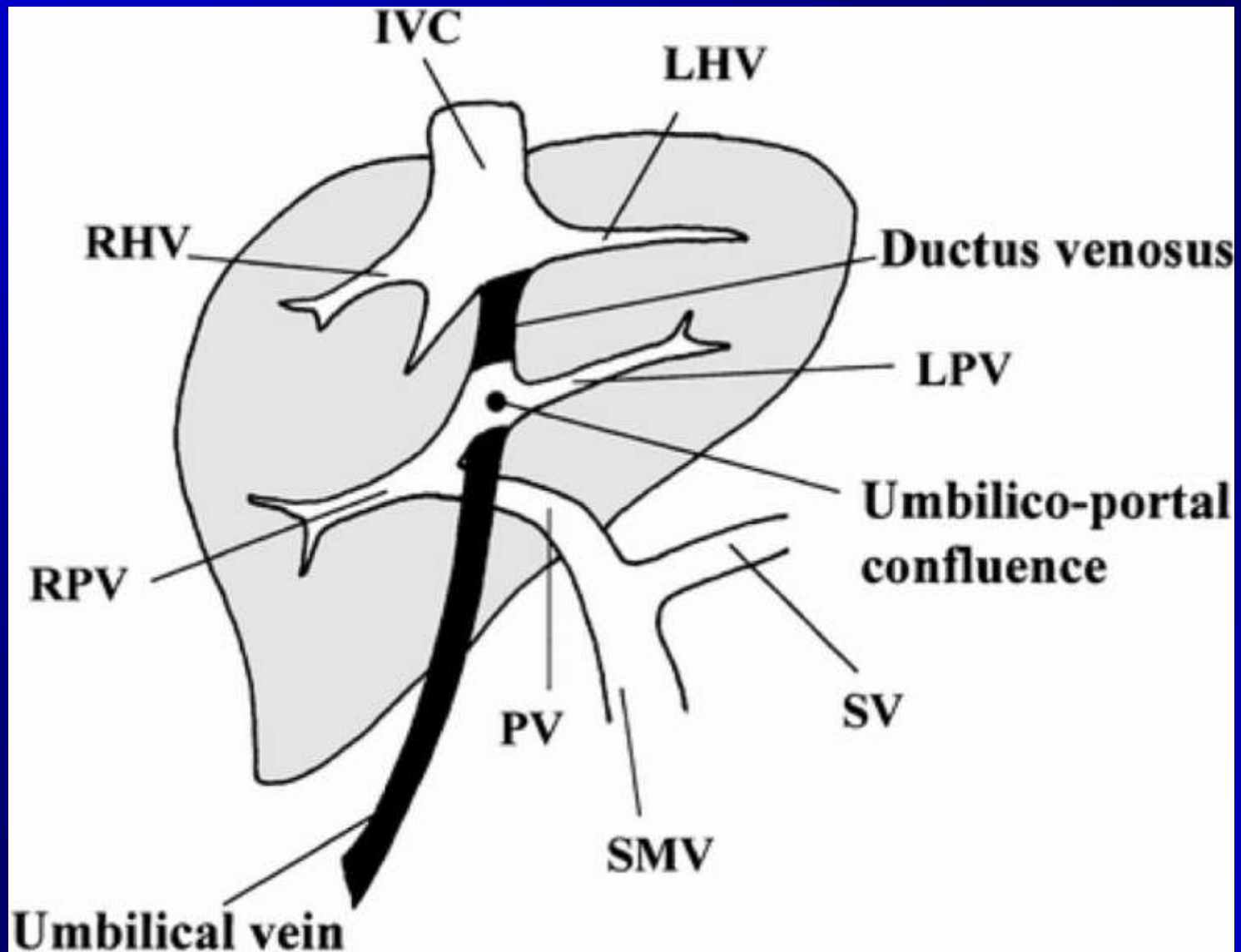
- KTVO
- KTAO
- KTC
- Utilisés en routine en réanimation-néonatalogie pour la nutrition parentérale, pour les différentes médications et pour les prélèvements pour suivi biologique des enfants

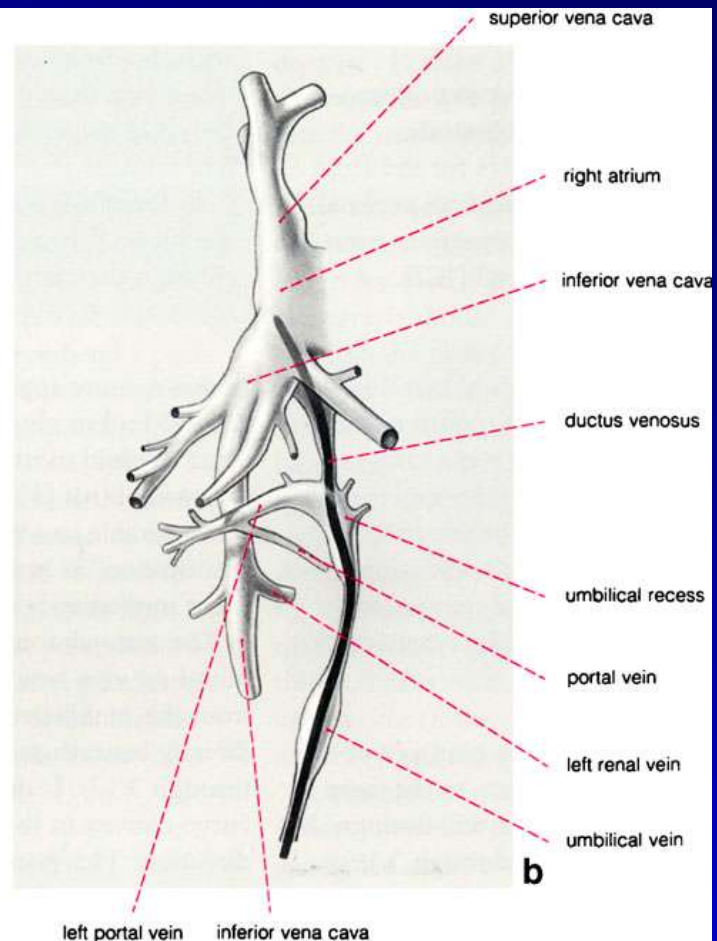
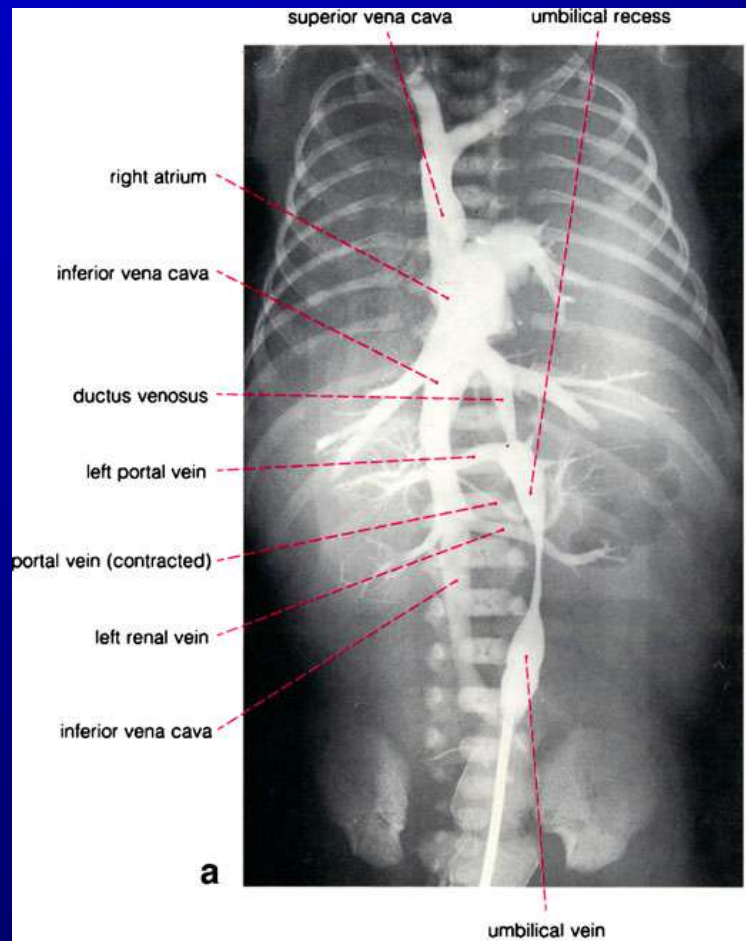
# INTRODUCTION 2

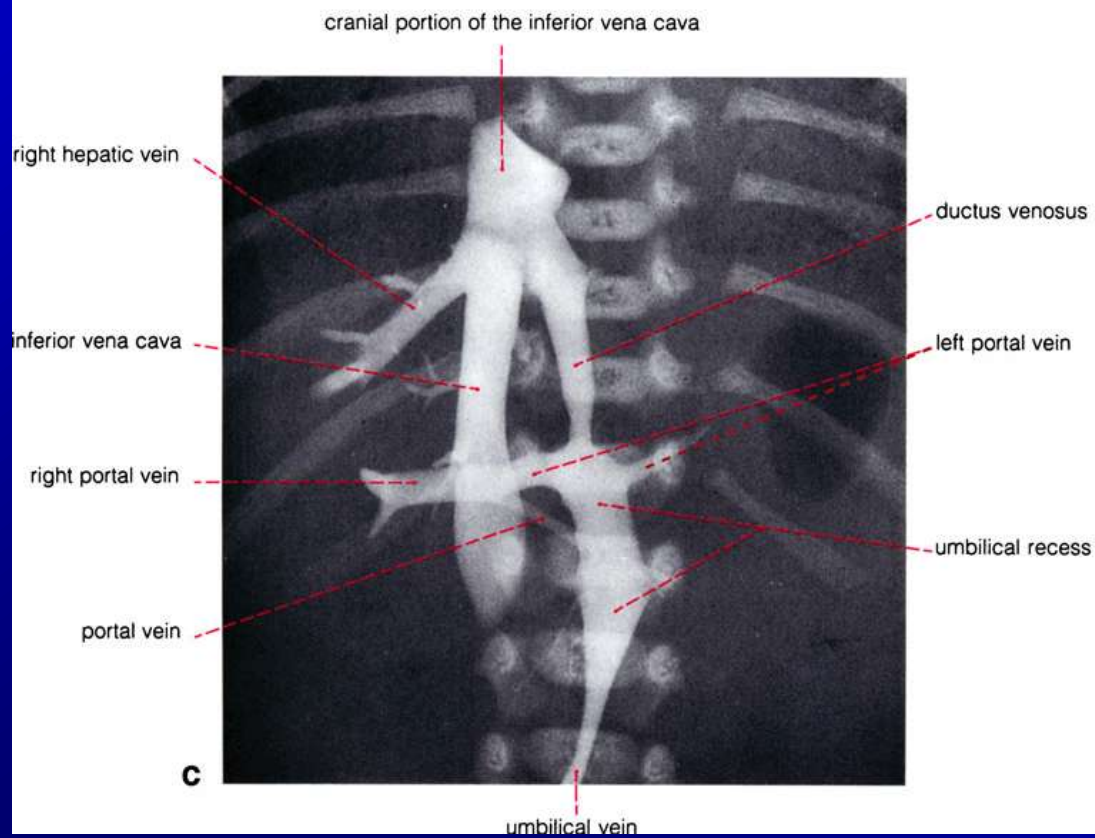
- Nécessité d'une bonne connaissance de l'anatomie circulatoire pré et post-natale pour affirmer :
  - la localisation correcte d'un cathéter
  - une malposition
  - une complication
  - diagnostiquer une anomalie vasculaire

# PRENATAL AND POSTNATAL ANATOMY OF THE CIRCULATORY SYSTEM

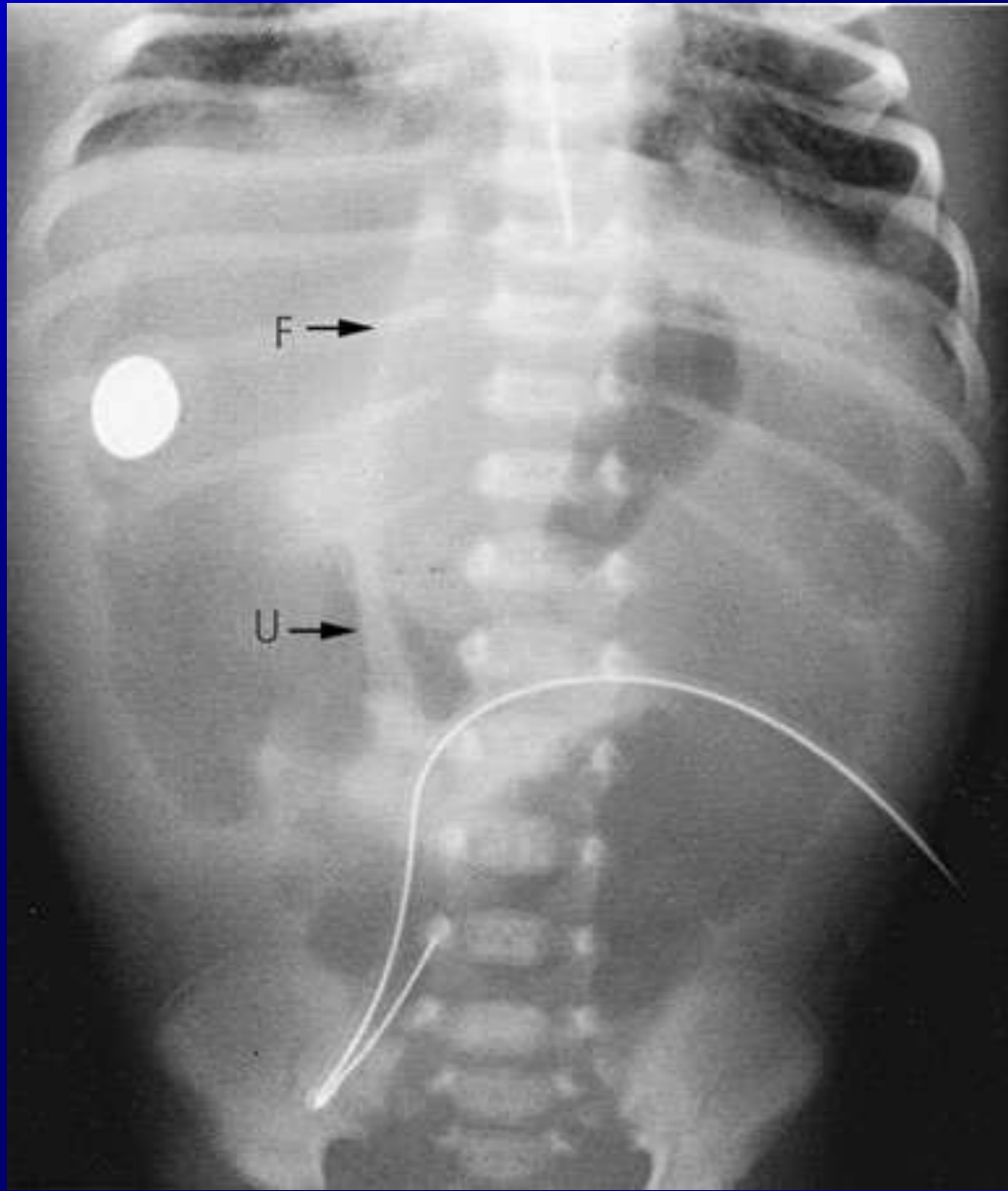










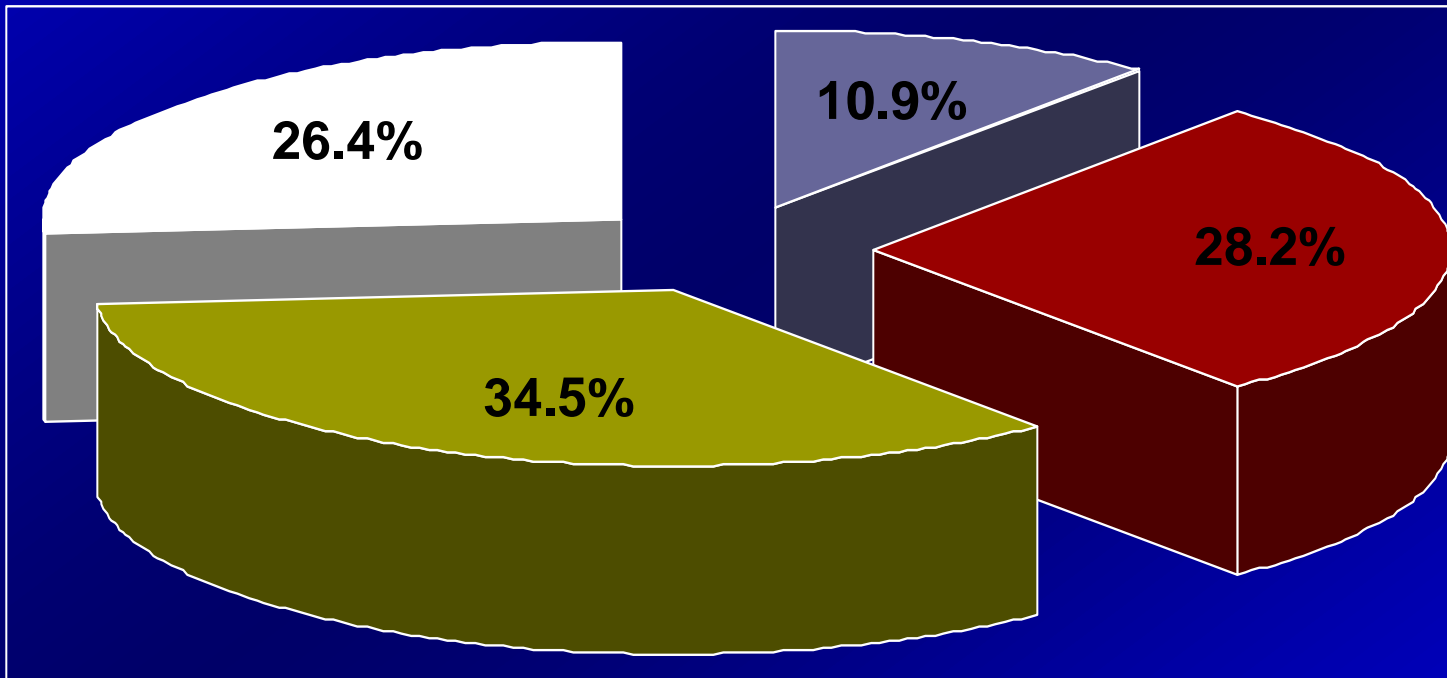


# AIM OF THE STUDY AND PATIENTS

*Retrospective study*

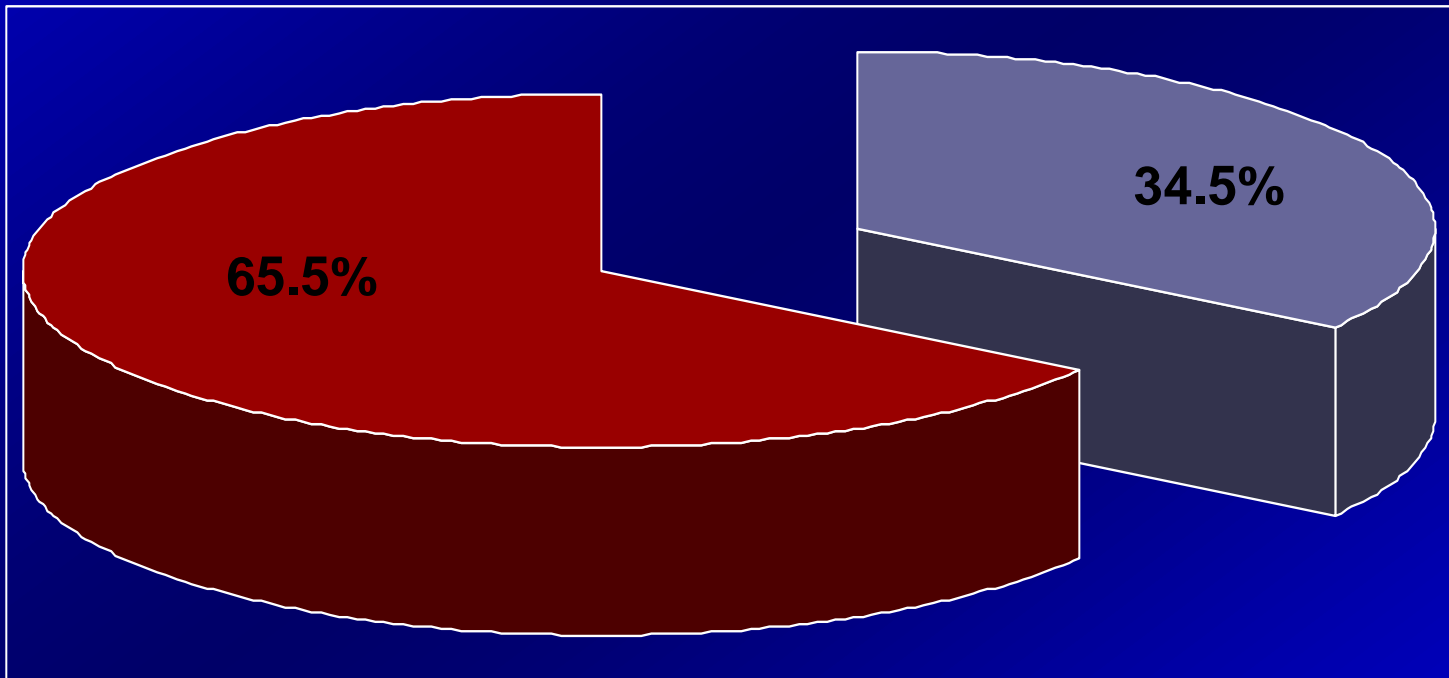
- \* Malpositions and complications
- \* weight  $\leq$  1500 g [535 – 1500]
- \* 257 patients (5 yrs)
  - \* 174 pt with catheters (67.7%) >>>  
270 catheters (1.55 cath/pt)

# GESTATIONAL AGE



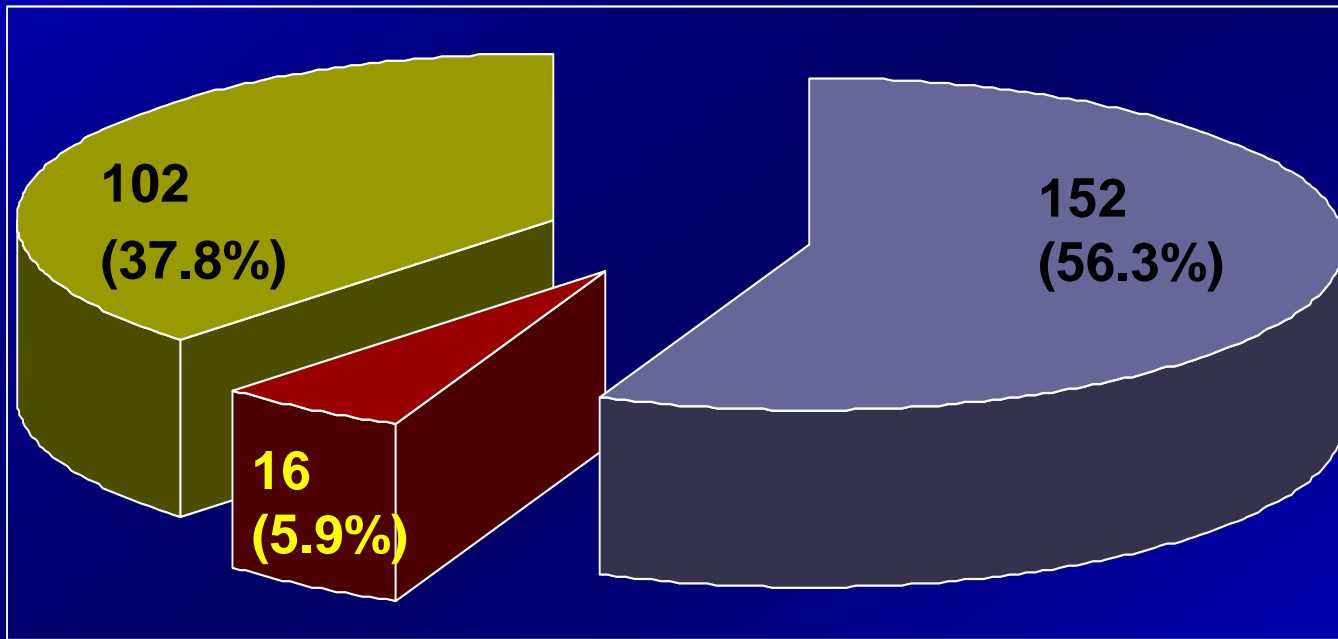
■ 23-25 sett ■ 26-28 sett ■ 29-30 sett ■ 31-34 sett

# WEIGHT



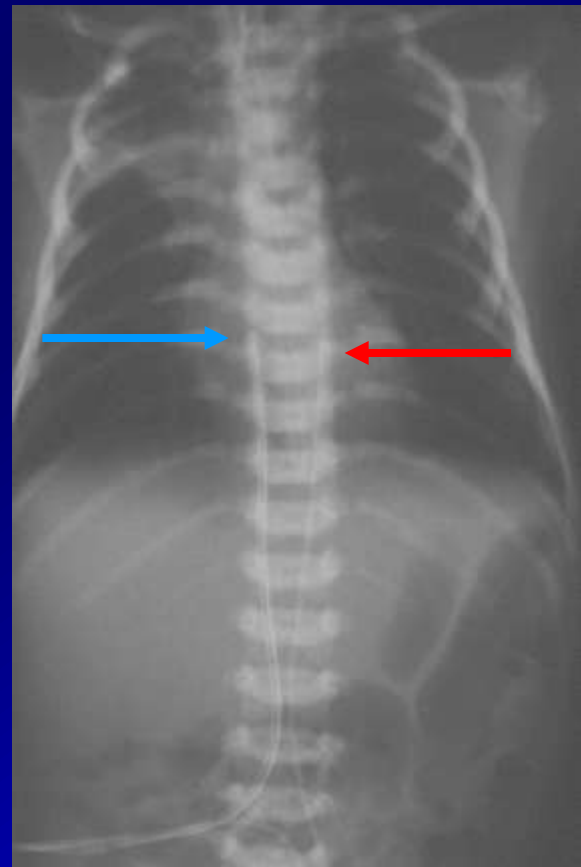
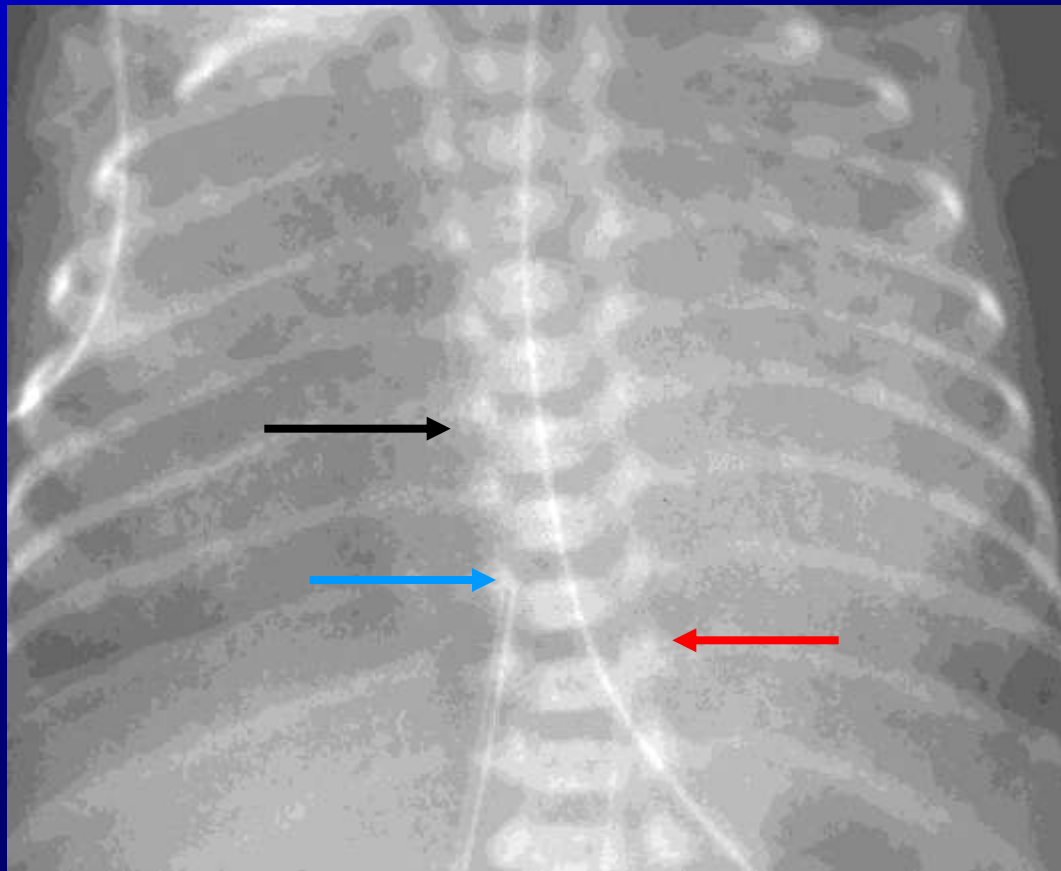
■ 535-999 g ■ 1000-1500 g

# CATHETERS

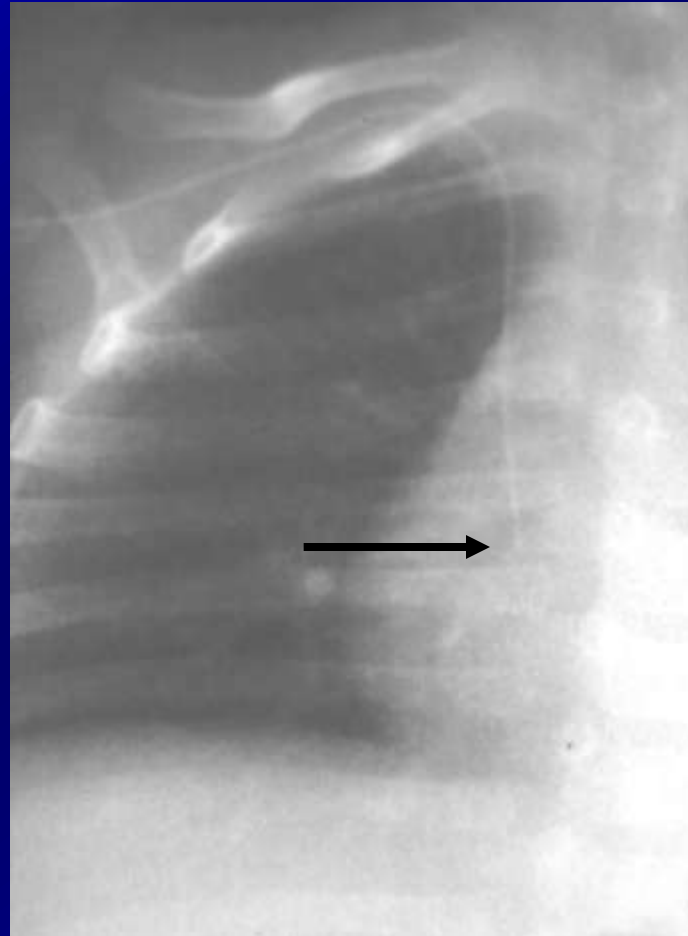


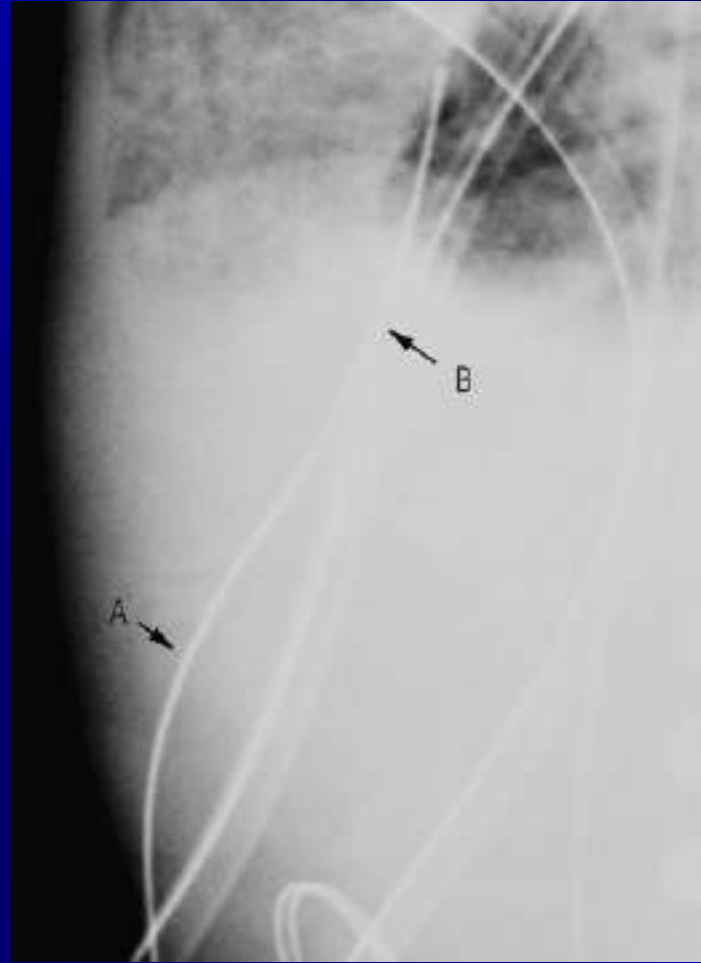
■ CVO ■ CAO ■ CVC

# CORRECT LOCATION



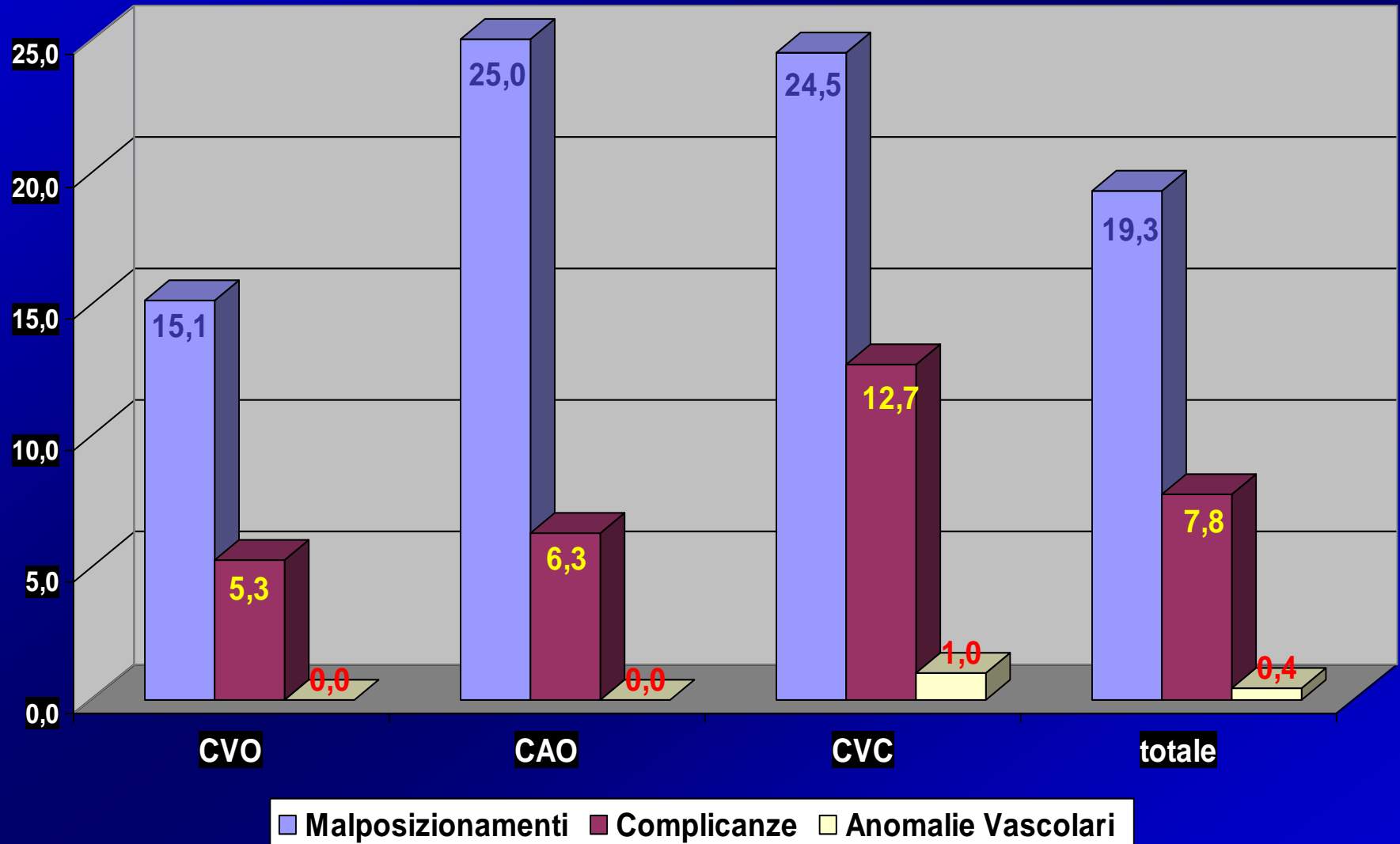
# CORRECT LOCATION



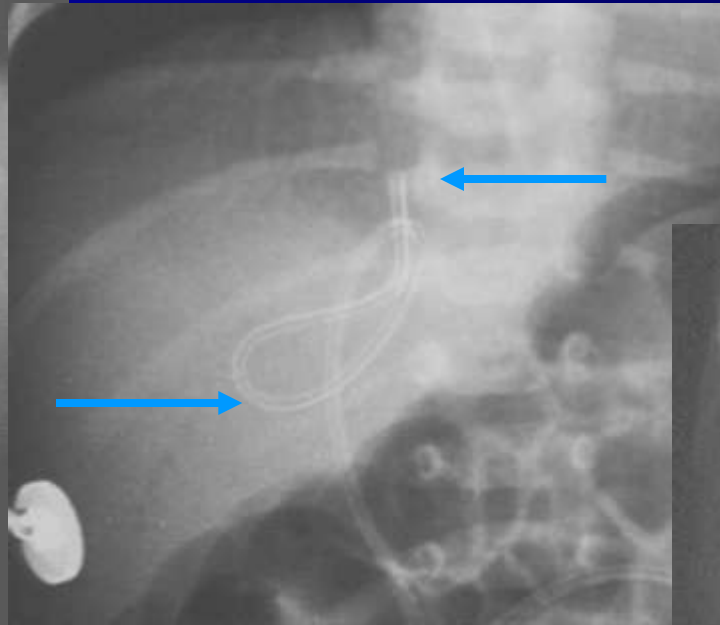
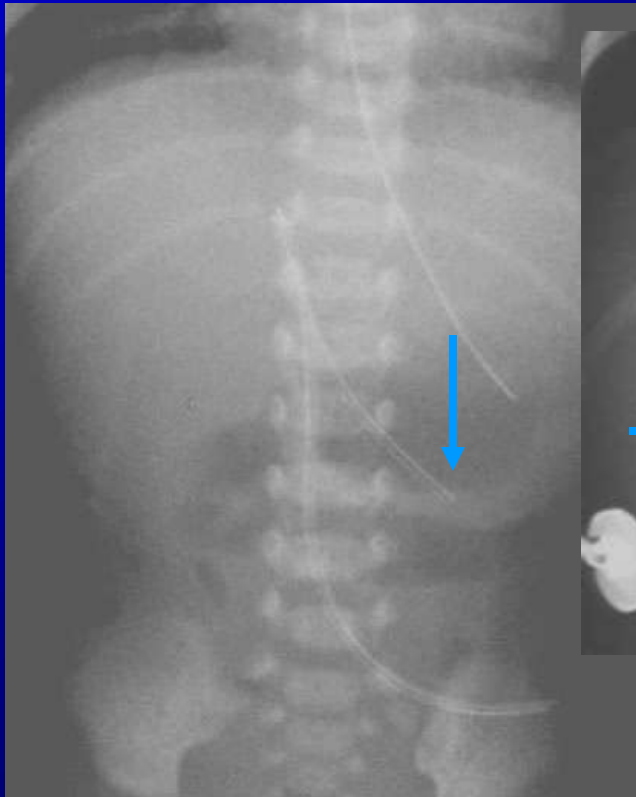




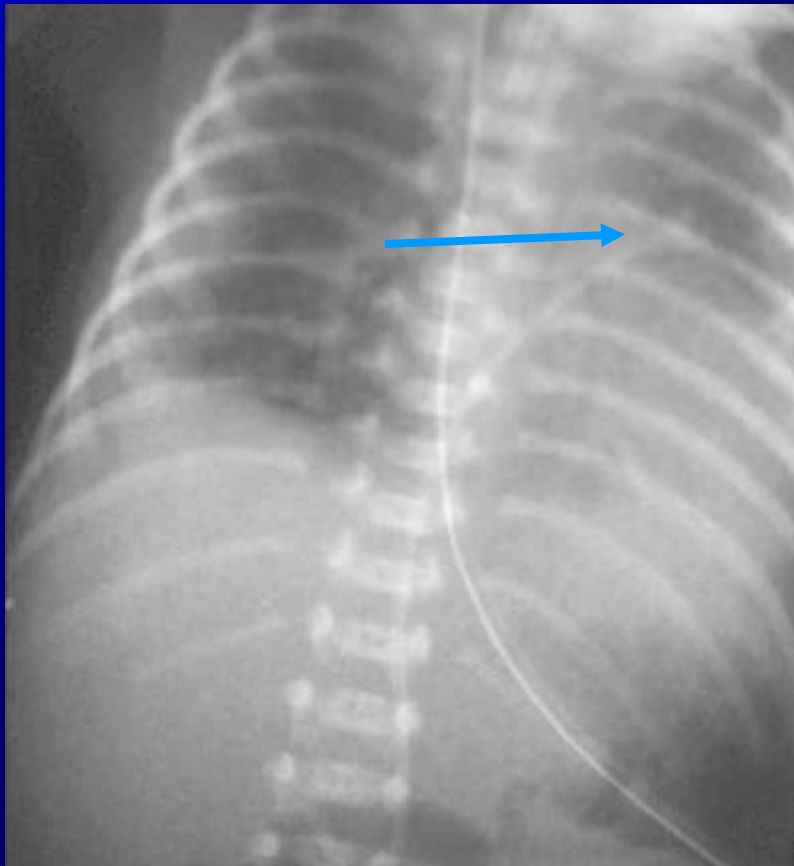
# RESULTS



# UVC MALPOSITIONS 23 (15.1%)



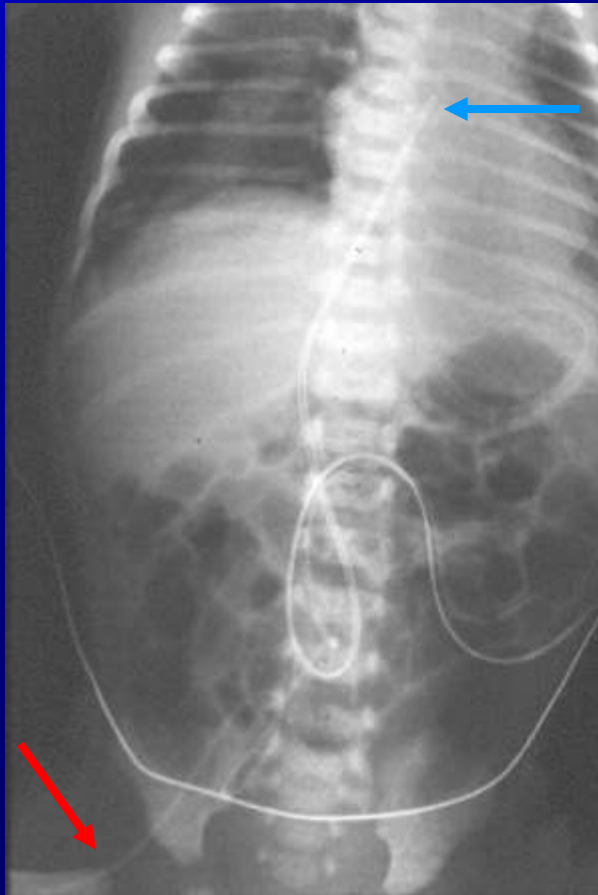
# UVC MALPOSITIONS 23 (15.1%)



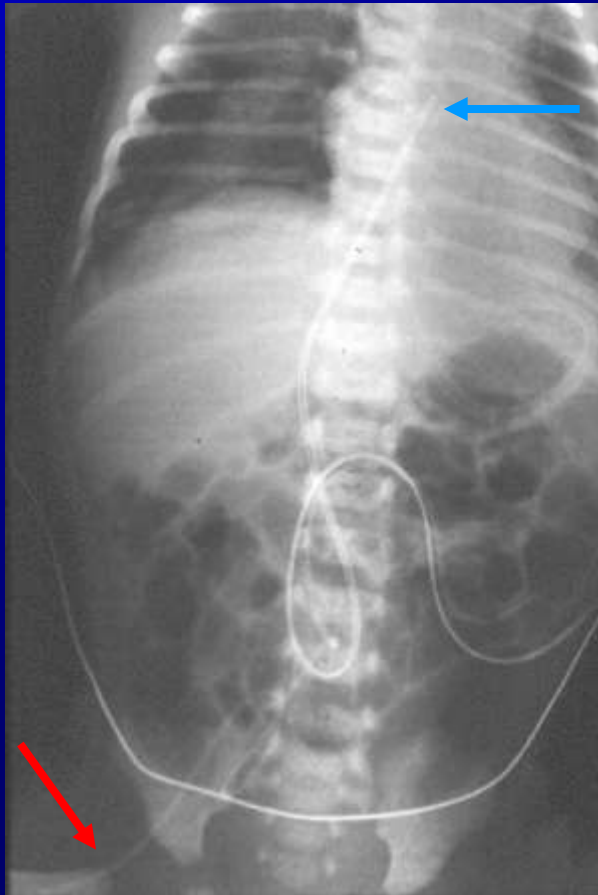
# UVC MALPOSITIONS 23 (15.1%)



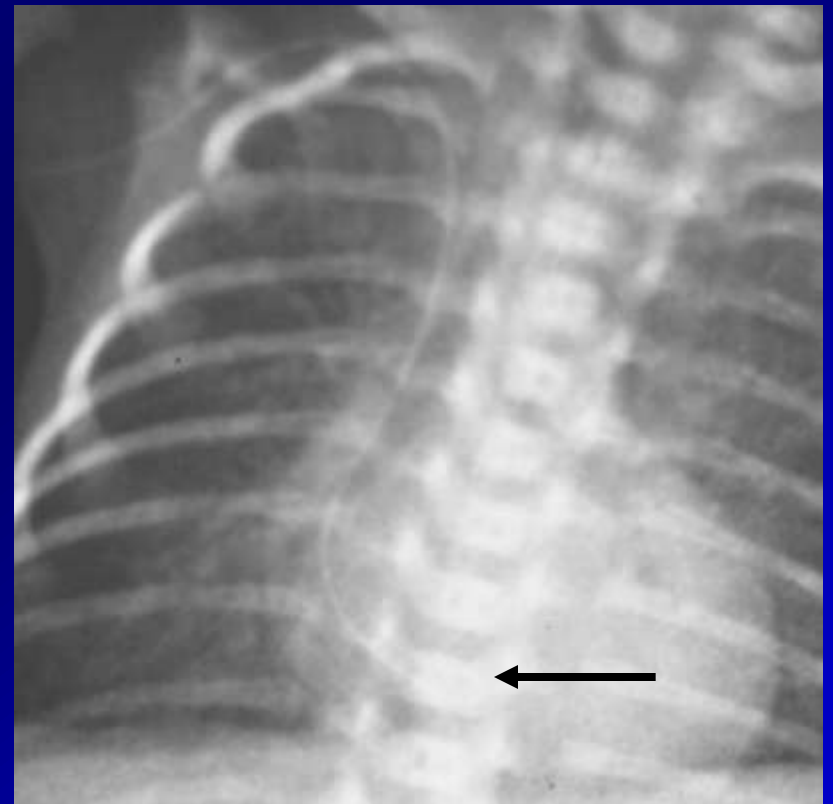
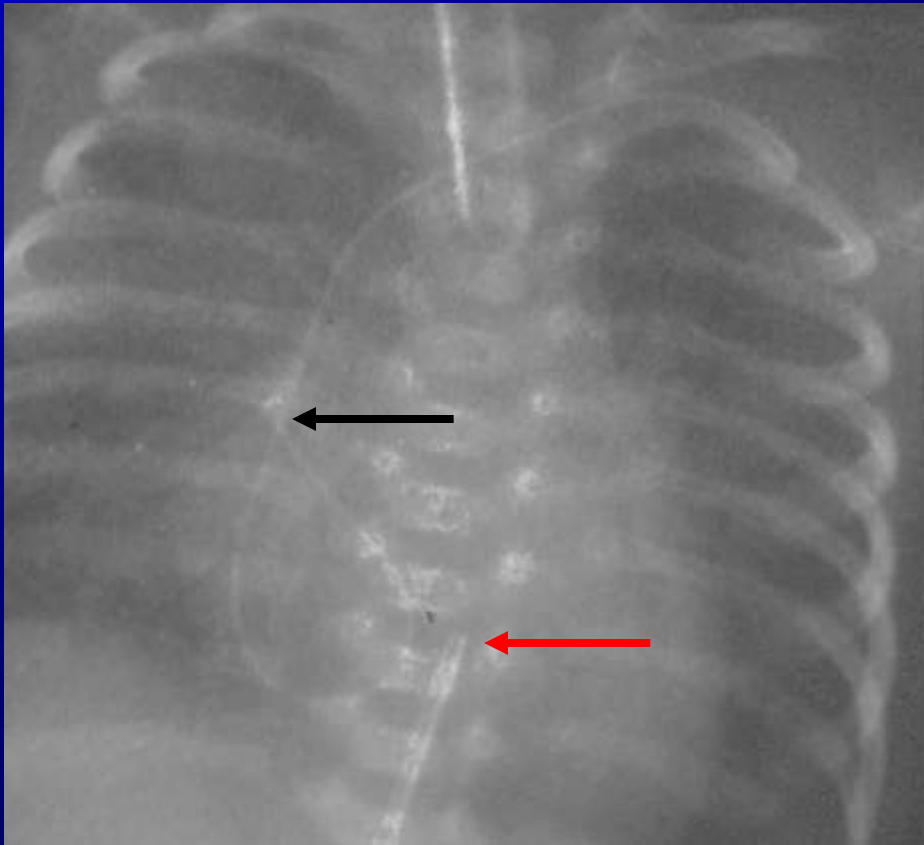
# UAC MALPOSITIONS 4 (25%)



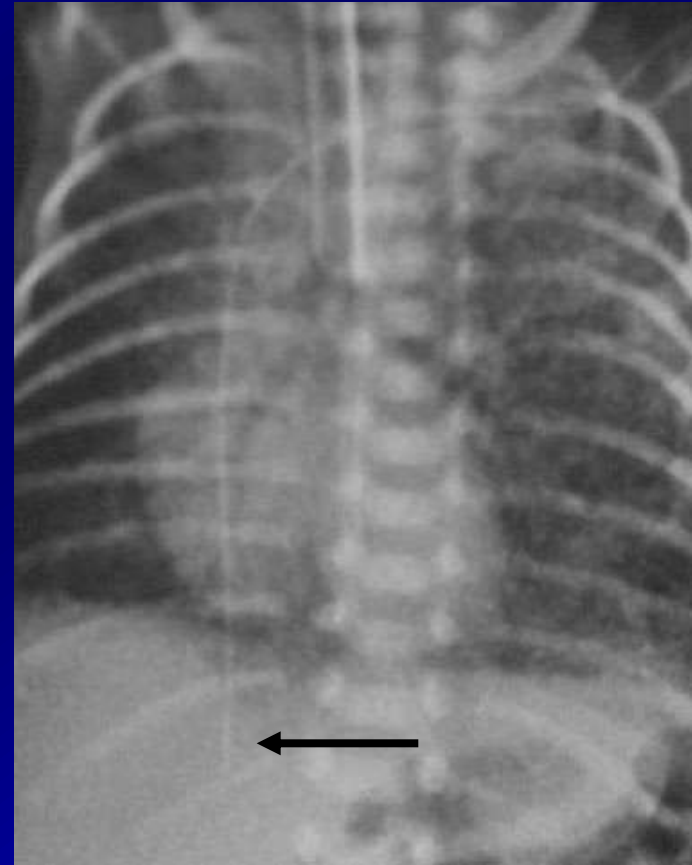
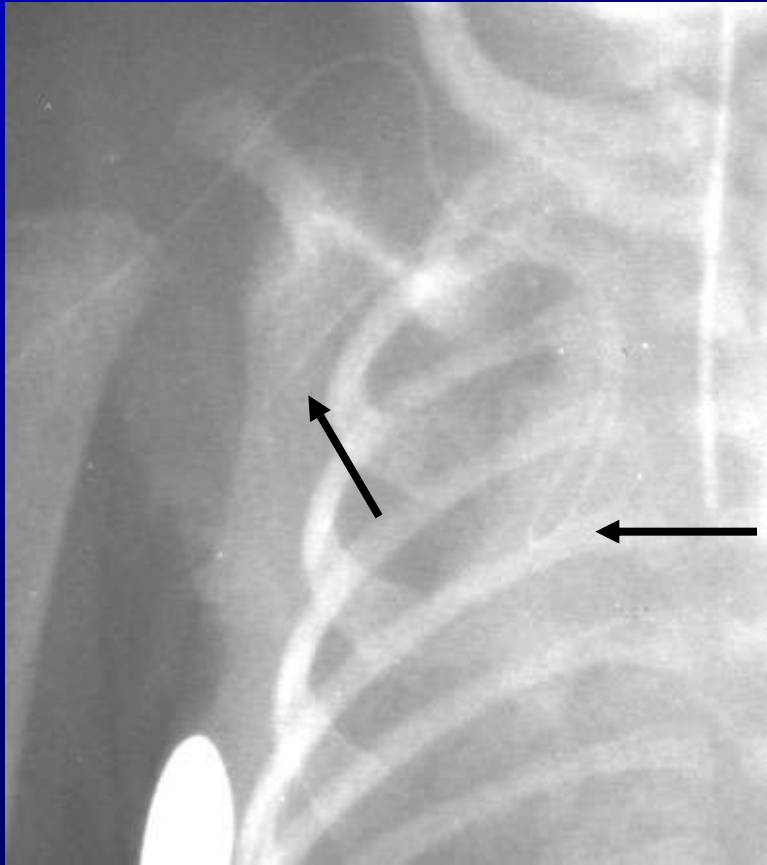
# UAC MALPOSITIONS 4 (25%)



# CVC MALPOSITIONS 25 (24.5%)

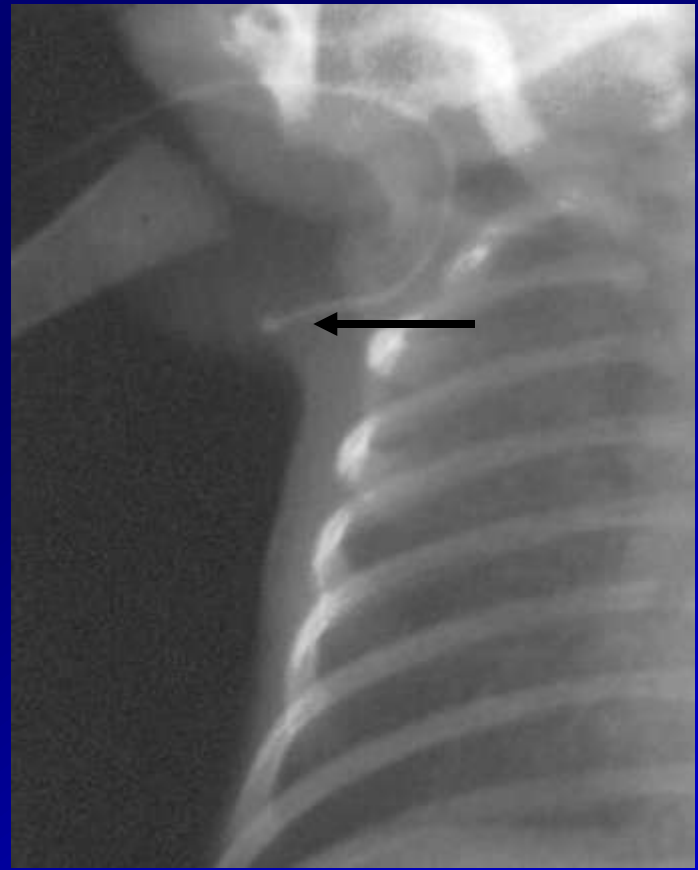
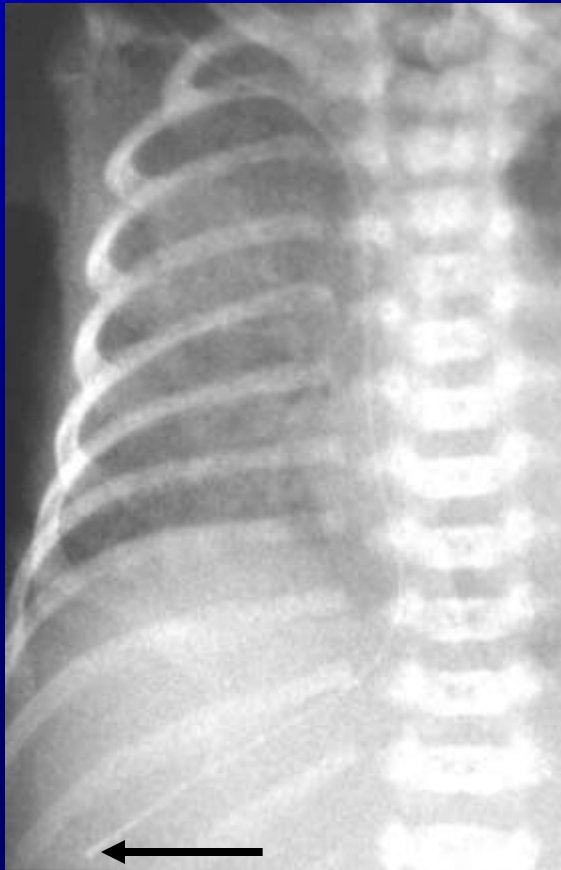


# CVC MALPOSITIONS 25 (24.5%)

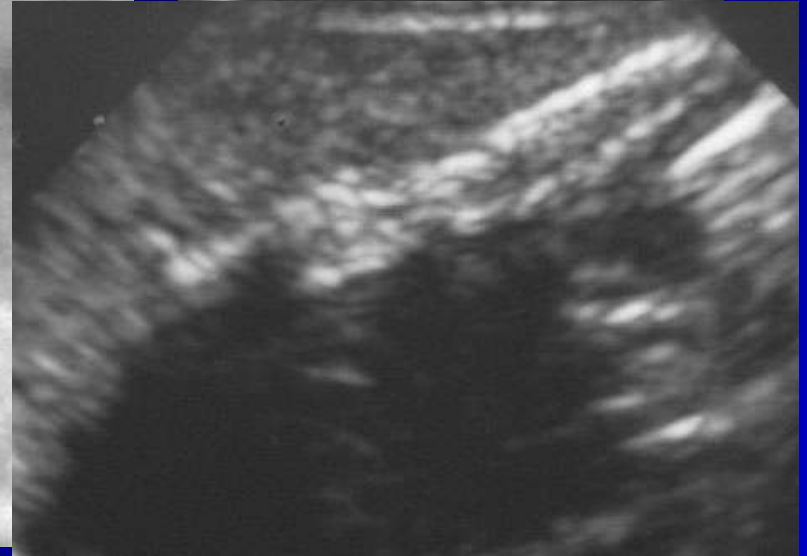
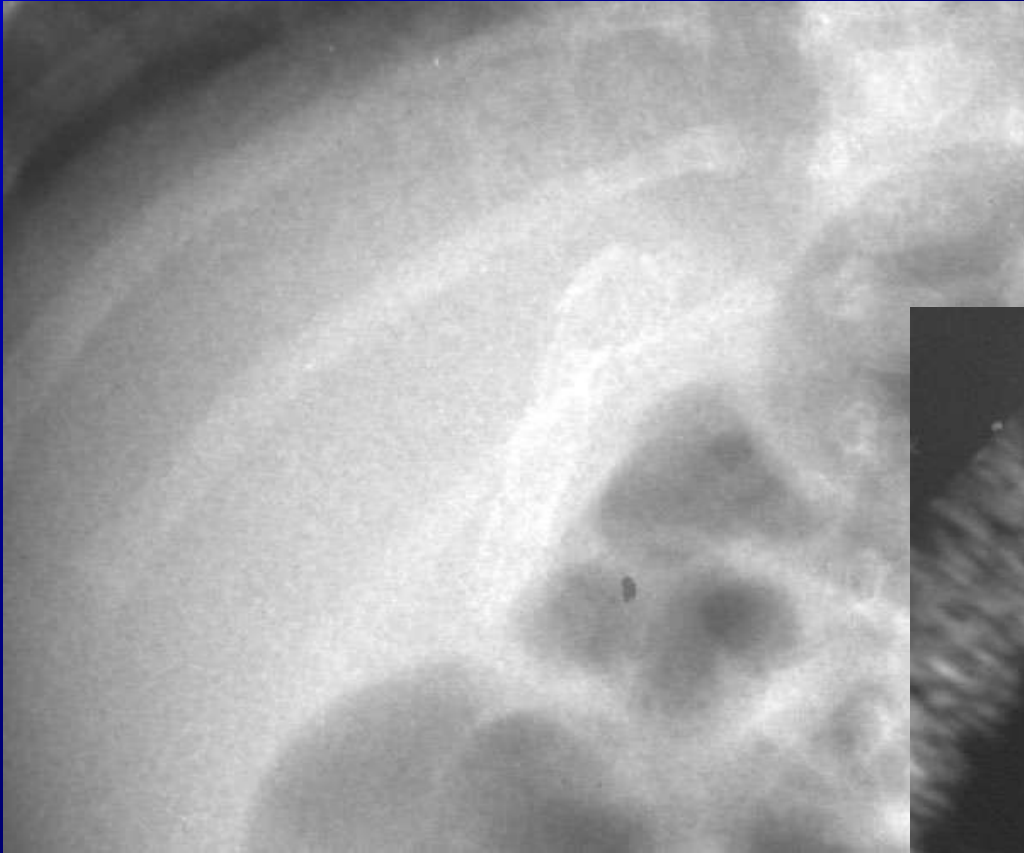




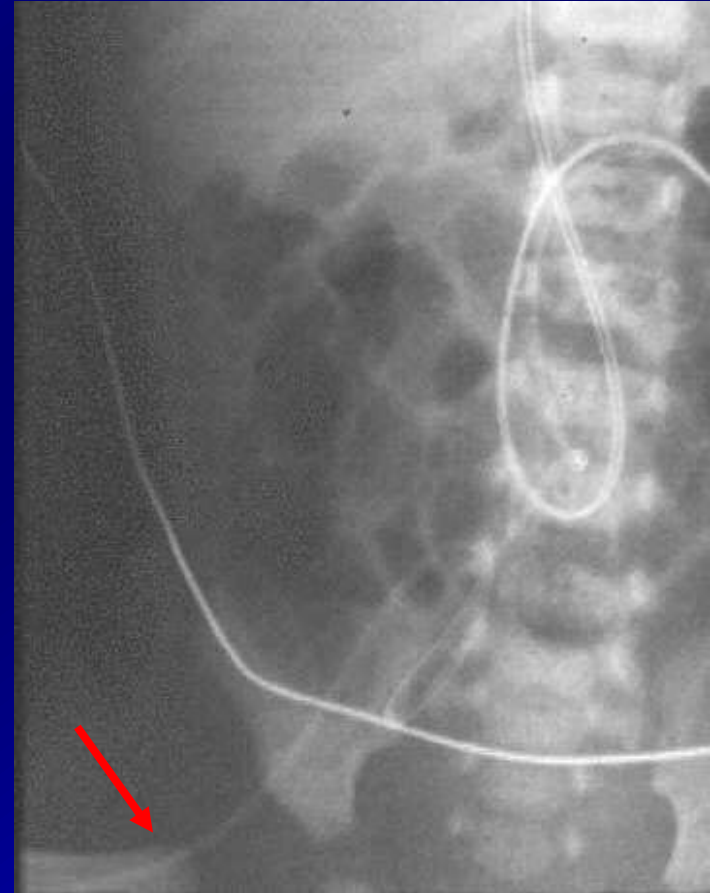
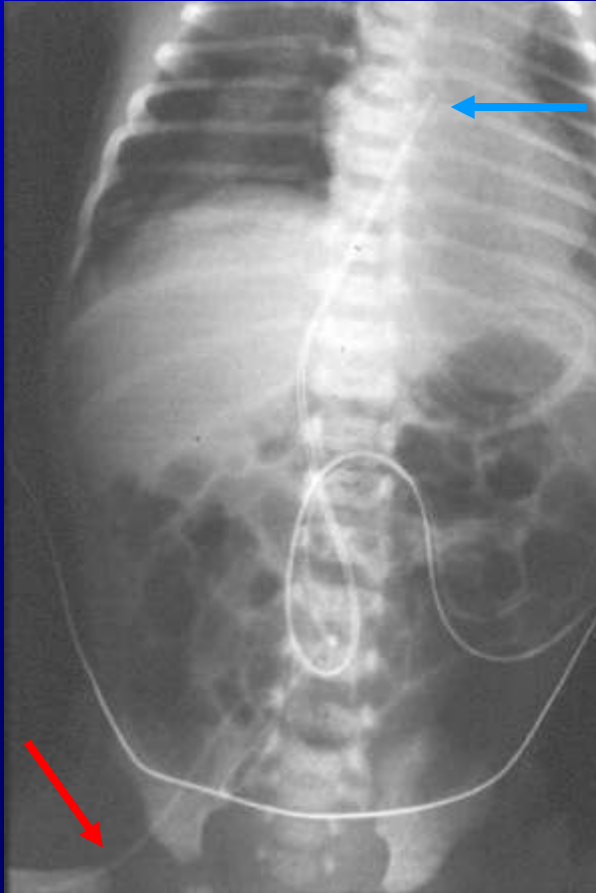
# CVC MALPOSITIONS 25 (24.5%)



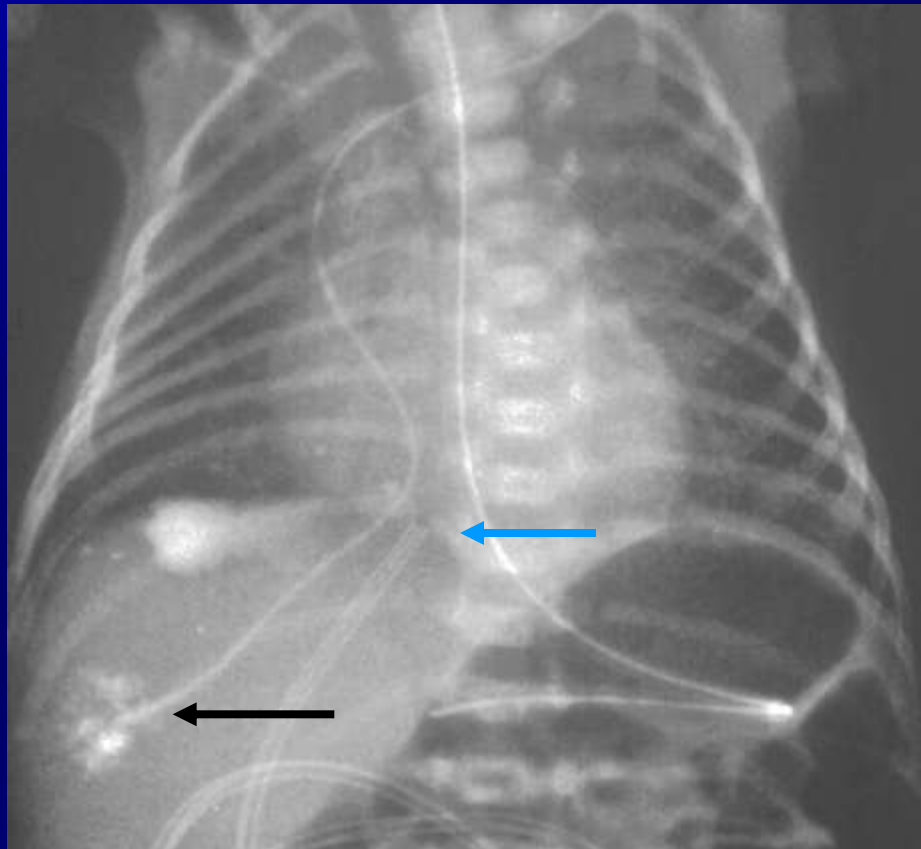
# UVC COMPLICATIONS 8 (5.3%)



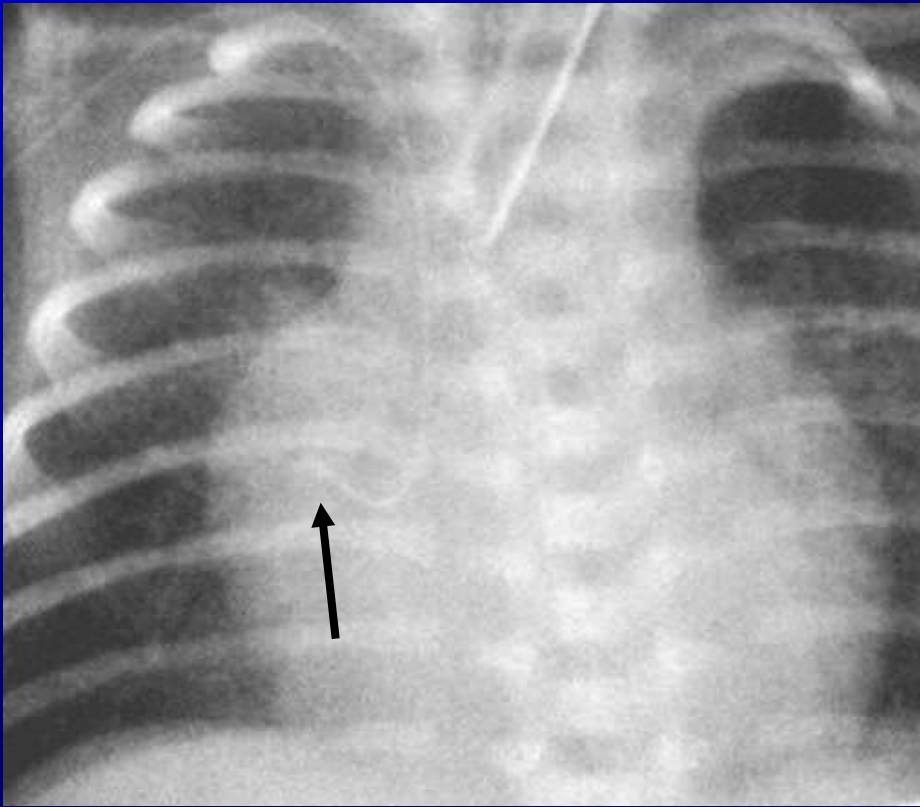
# AUC COMPLICATIONS 1 (6.3%)



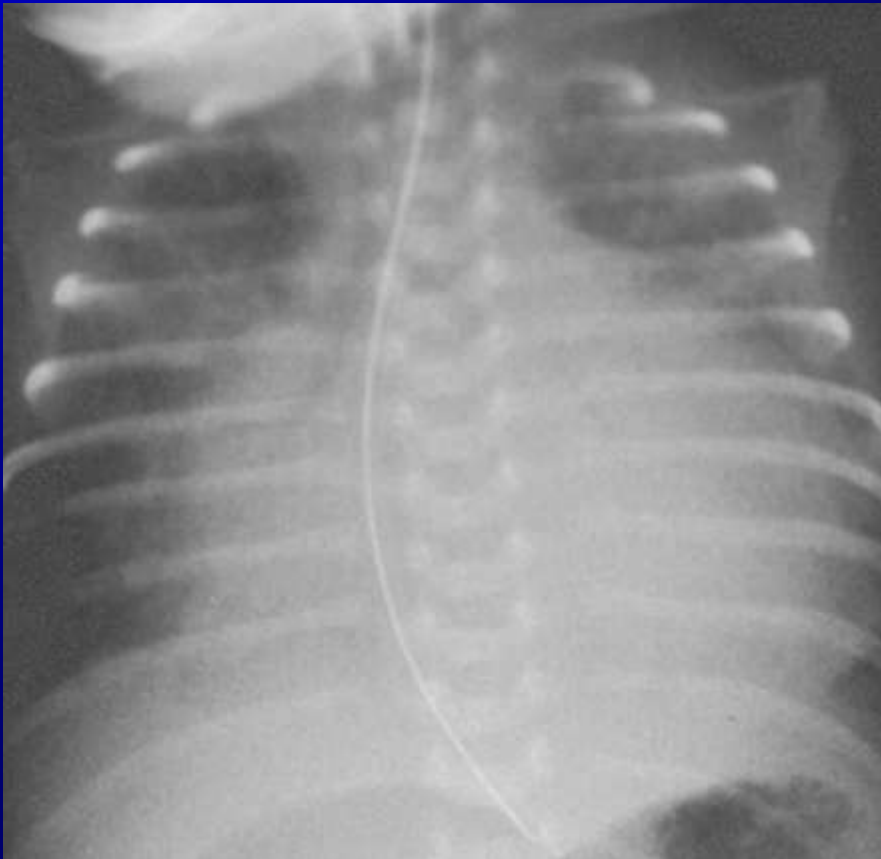
# CVC COMPLICATIONS 13 (12.7%)



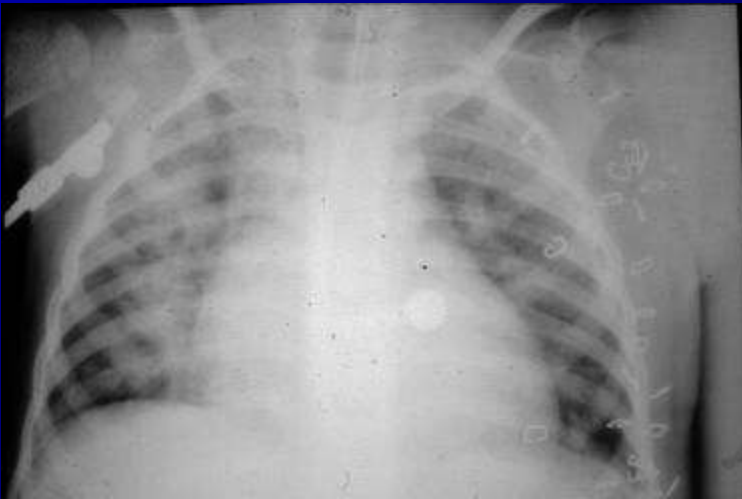
# CVC COMPLICATIONS 13 (12.7%)



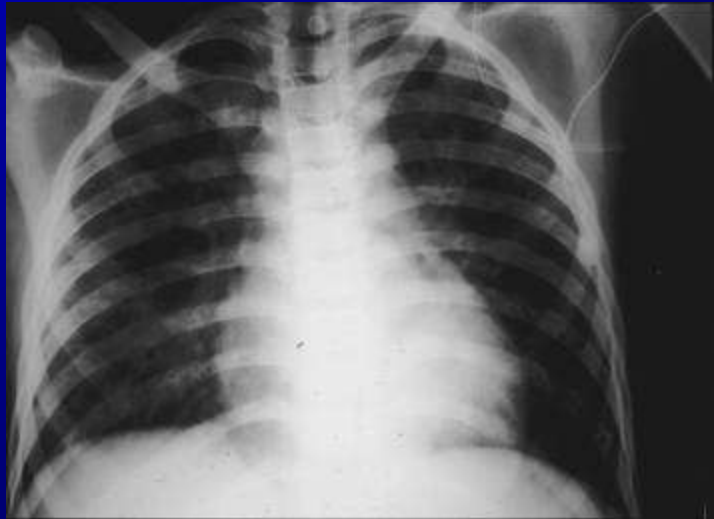
# CVC COMPLICATIONS 13 (12.7%)



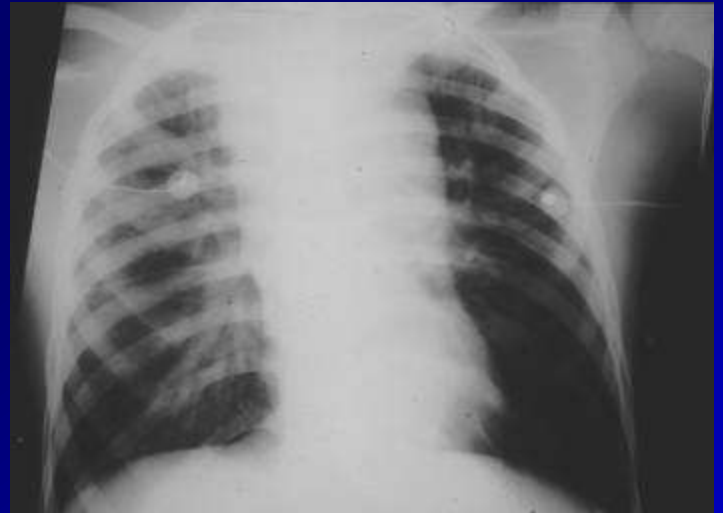
# POSE DE CATHÉTER



# POSE DE CATHÉTER



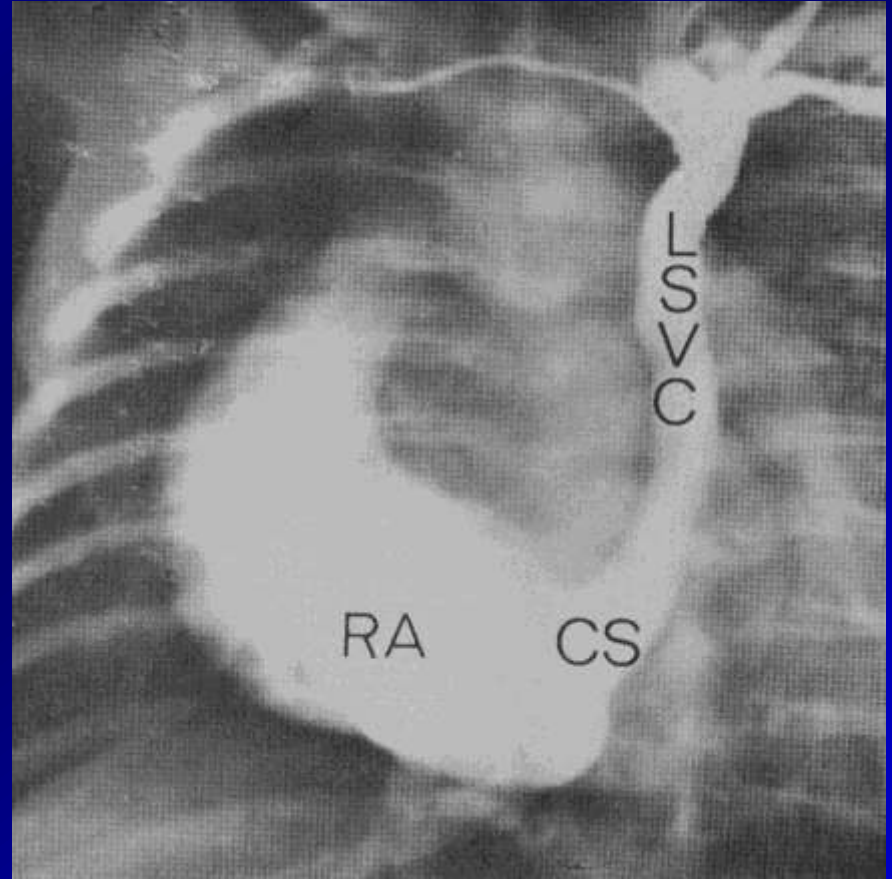
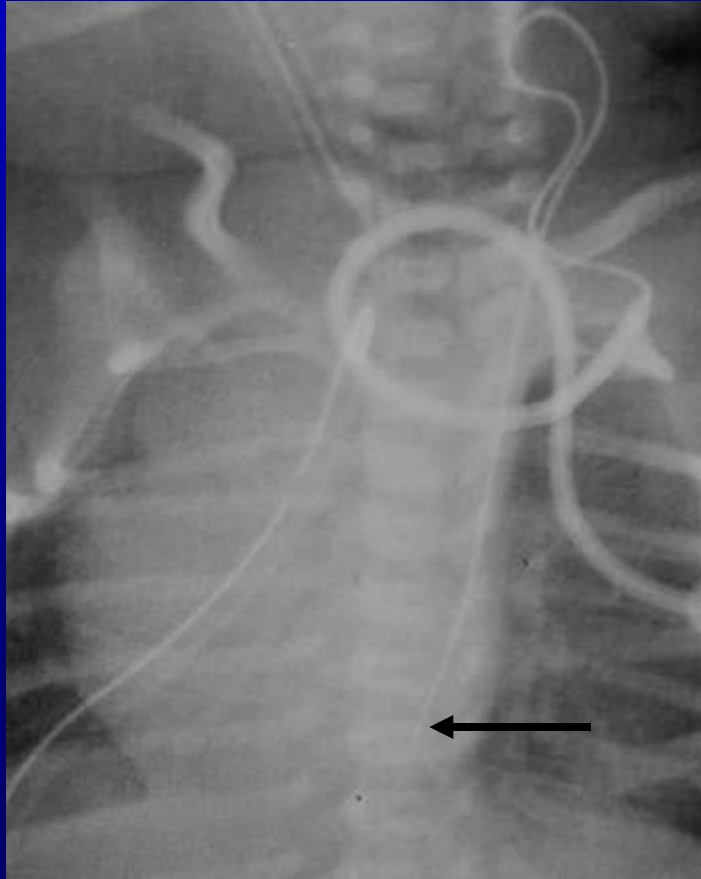
Avant



Après



# CVC VASCULAR ANOMALIES 1 (1%)



# CONCLUSION 1

- Les cathéters sont indispensables dans la prise en charge des prématurés
- Respect des procédures
- Contrôle radiographique

# CONCLUSION 2

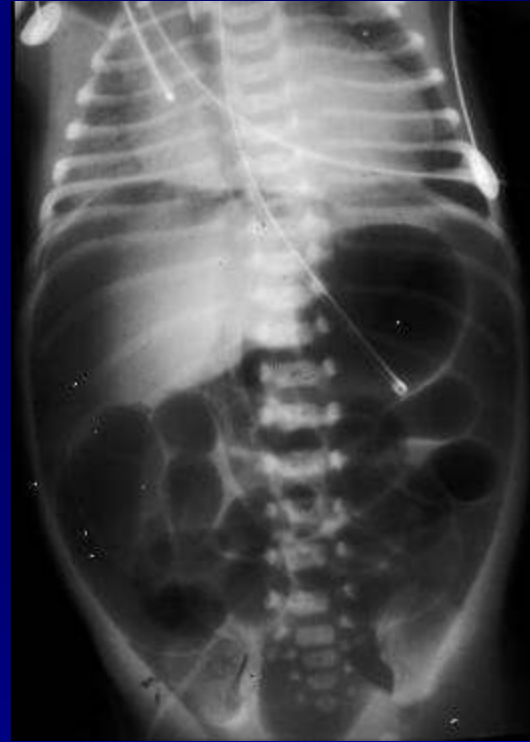
Mauvaise position dans 19,3%

Complication dans 7,8%, plus fréquentes  
avec les cathéters centraux

■ ET LES SONDÉS????

# SONDE D'INTUBATION





# SONDE D'INTUBATION – SONDE GASTRIQUE

